

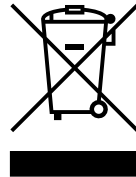


Troubleshooting

Symptom	Probable Cause
Device Not Seen By Panel	Check the device is addressed within the range of the panel Other panels - check panel manuals for info Check that loop is connected with correct polarity Check that sounder flying leads have been connected to the back-box. Check the panel is running the SMARTWIRE protocol
Sounder Is Not Operating	Check panel`s actions (cause & effect) programming is correct.
Can Not Start An Individual Sounder	Check whether triggering individual sounders is supported by the control panel Check the cause & effect programming to see if common sounder operation has been selected

Other Information

Like all electronic equipment, at the end of it`s working life this unit should not be disposed of in a refuse bin. It should be taken to a local reprocessing site as per the guidelines of the WEEE directive, for correct disposal.



xxxx

ILLUMINO IGNIS LTD, UNIT 8 TOWER SQUARE, TOWER CLOSE, HUNTINGDON,
PE29 7DT

12

xxxx-CPD-xxxxxx

EN54-3:2001+A1:2002 + A2: 2006

Alarm Devices - Sounder

Type A: For Indoor Use

V20014

SMARTWIRE ADDRESSABLE SOUNDER INSTALLATION MANUAL

Description

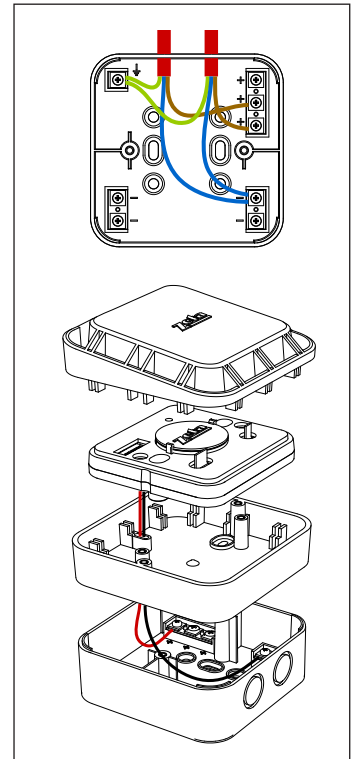
The SMARTWIRE Sounder is an indoor wall mounted piezo sounder that works with the SMARTWIRE protocol.

It has been designed to make an “electronics free” first fix.

Connections - First Fix

The loop wiring connects to terminals in the back box

Terminal	Label	Wire Colour	Description
Top Left	Earth	Green/Yel-low	Loop Earth Point
Top Right	+	Brown	Loop In/Out +ve
Bottom Left	-	Not used	Not used on addr. Sounder
Bottom Right	-	Blue	Loop In/Out -ve



Final Fix

- Fix the sounder flying leads to the Loop +ve (RED Wire) and
- Loop -ve (BLACK wire) terminals.
- Screw the sounder body to the backbox.
- Set the sounder address (See Address setting)
- Fit the sounder front cover

Address Setting

This sounder is addressed via an 8 way dip switch. All 8 switches are used for the address setting. It is a binary arrangement, with ON being the zero position.

Switch	Value when ON	Value when Off
1	0	1
2	0	2
3	0	4
4	0	8
5	0	16
6	0	32
7	0	64
8	0	128

The Switch settings can be calculated using these numbers. EG 21 = 16 +4 +1, so Switches 1,3 & 5 are off, all the others are on. For convenience a table of all address settings can be found at the end of the manual.

Protocol Usage

The SMARTWIRE Sounder works on the SMARTWIRE protocol only. The flasher (if fitted) can be triggered independently to the sounder, if the control panel supports that function.

Sounder Synchronisation

The SMARTWIRE sounders support the SMARTWIRE sounder synchronisation mechanism.

Alarm Tone Selection

The SMARTWIRE sounder supports alarm tone selection. IE, the installer can decide which alarm tone the sounders will use. The alarm tone can be set for the whole system via the control panel. One of 16 tones can be chosen for the alarm tone.

No	Tone Description	Pattern		Rate	dBA (Reverb. Chamber)
0	BS Fire (Default SMARTWIRE tone)	Alternating	800 & 970	1Hz (500ms-500ms)	102 (+/- 2dB)
1	BS Fire	Alternating	800 & 970	2Hz (250ms-250ms)	101 (+/- 2dB)
2	BS Fire	Sweep	800 to 970	1Hz (1 per second)	95 (+/- 2dB)
3	BS Fire	Sweep	800 to 970	7Hz (7 per second)	96 (+/- 2dB)
4	BS Fire	Sweep	800 to 970	50Hz (50 per second)	96 (+/- 2dB)
5	BS Fire	Alternating	510 & 610	1Hz (500ms-500ms)	93 (+/- 2dB)
6	German fire (DIN 33 404)	Sweep (DIN)	1200 to 500	1Hz	96 (+/- 2dB)
7	French fire (NFS 32-001)	Alternating	554 & 440	100ms-400ms	95 (+/- 2dB)
8	Dutch fire (NEN 2575)	Slow whoop	500 to 1200	3.5s sweep, 0.5 s silence, then repeat	96 (+/- 2dB)
9	PFEER Toxic Gas	Continuous	970	Steady	101 (+/- 2dB)

10	PFEER alert		970	0.5Hz (1s On/1s Off)	101 (+/- 2dB)
11	Reserved	-	-	-	-
12	Reserved	-	-	-	-
13	Reserved	-	-	-	-
14	Reserved	-	-	-	-
15	Reserved	-	-	-	-

Selecting a Reserved tone will cause the sounder to play tone 0. The default alarm tone will be tone 0.

Other Tones

The sounder has 3 tones that can be triggered in normal running:-

- Alarm Tone - Selectable - see list above.
- Alert tone - 970Hz intermittent. 0.5s on, 0.5s off
- Emergency - 970Hz intermittent: 3 x 500ms pulses, 1.5s silence, then repeat

The availability of these tones will depend on the Control panel used.

Technical Data

Model		
Part Number	V20014	
Operating Voltage	17 - 28V Dc	17 - 28V Dc
Quiescent Current	650Ma	650Ma
Alarm Current	4.5Ma	4.5Ma
Sound Output	Aprox 90 Db (Depending On Tone - See Table)	Aprox 90 Db (Depending On Tone - See Table)
Colour	Red	White
Minimum Continuous Operating Temperature	0° C	0° C
Operating Temperature	-10° C To +55° C	-10° C To +55° C
Max Humidity	95% Rh Non Condensing	95% Rh Non Condensing
Ip Rating	Ip 21C	Ip 21C
Size (W X H X D) Mm	100 X 100 X 80	100 X 100 X 80
Weight	200G	200G